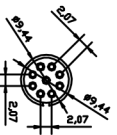
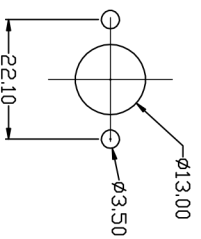
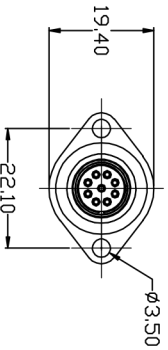
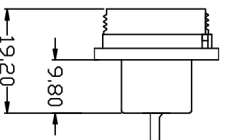
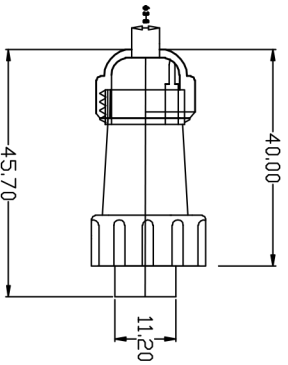
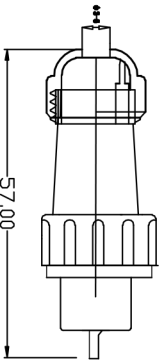


REV. 6	APP. NO.	REV. No	REVSER	APPD.
PP	ECON. PP	PP	PP	PP
F21	DRAWING			



适用 $\phi 3-6$ 线缆

技术要求:

1. 引脚应排列整齐, 要求无偏位现象。
2. 外观应无明显缺陷, 如: 熔接痕、缩孔、颜色不一致等。
3. 可焊性应符合要求
4. 线规直径: $\leq 0.785\text{mm}/18\text{mm}$
5. 接触电阻: $10\text{m}\Omega$
6. 工作电压: 125V
7. 接线方式: 焊接
8. 电流: 3A
9. 接触直径: $\phi 0.7/9$

TYPE NO.		TITLE	
型号: SP18P法兰 9芯		名称: ASSEMBLY 插配圈	
>120	± 0.50	DWG. NO.:	KNT-TL-20
>30~120	± 0.30	图号:	
>8~30	± 0.20	SCALE:	FULL
0~6	± 0.10	比例:	1/1
ANGLE		UNIT:	[mm]
$\pm 1^\circ$		REV.:	F20
DR. 设计:		图次:	